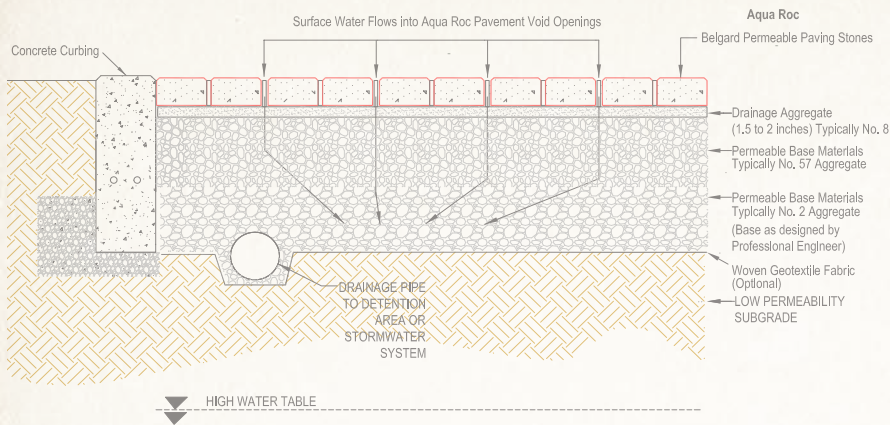


Aqua-Roc™

A versatile permeable paver with high visual appeal, low maintenance, and proven durability.

- ADA compliant.
- Provides solution for EPA Phase II Requirement.
- Controls runoff & eliminates standing water.
- Improves water quality.
- Lowers construction costs.

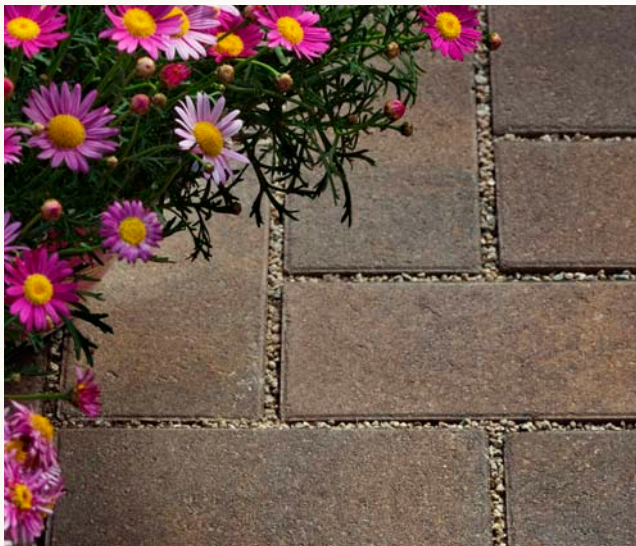


Benefits PICP

- Reduces pollution from rain water run off
- Reduces runoff from common rainstorms by as much as 100%
- 50 year life-cycle for surface
- Compatible with underground storm water storage systems
- Outperforms similar systems in harsh climate or freeze thaw cycles
- Replaces detention/retention ponds

LEED Credits with Permeable Pavers:

- SS CREDIT** 6.1 - Storm Water Design 1 pt.
- SS CREDIT** 6.2 - Storm Water Design Quality Control 1 pt.
- MR CREDIT** 5.1 - Regional Materials 1 pt. 10% extracted
- MR CREDIT** 5.2 - Regional Materials 1 pt. 20% extracted
- MR CREDIT** 4.1 - Recycled Content 1 pt. 10% Post Consumer
- SS CREDIT** 7.0 - Heat Island Effect 1 pt.



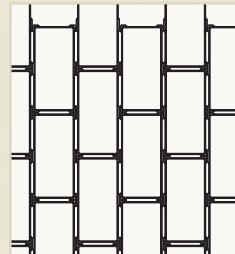
Installation infill aggregate requirement: 2.22 CF/Pallet or .025 CF/SF



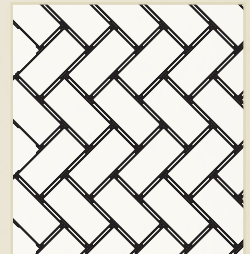
Belgard is a member of the ICPI and NCMA and complies with or surpasses the standards of both organizations.



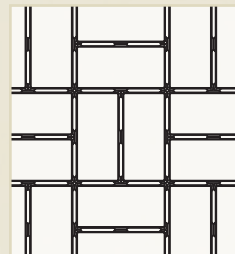
PATTERNS



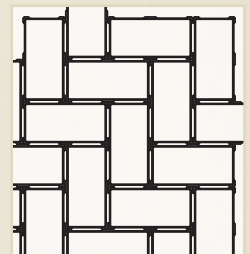
Running Bond



Herringbone 45 Degree



Basket Weave



Herringbone 90 Degree

AQUA-ROC™



90 sq. ft per pallet
 11.25 sq ft per layer
 Specs: 9" x 4.5" x 3.15"
 Void Opening 8.90%
 Infill needed 2.22 CF per pallet
 or .025 CF/SF